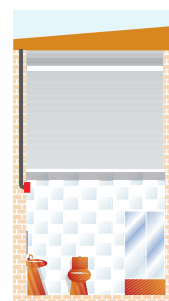
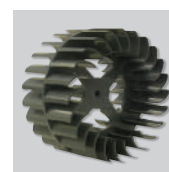




Centrifugal fans, with an approximate airflow of 100 m³/h at free discharge, back draft shutter incorporated, body and impeller made of polypropylene, 230V-50Hz motor, IPX2, Class II. Specially designed for installations where pressure losses have to be overcome, to work at temperatures up to 40°C.



Back draft shutter
fitted with an automatic back draft shutter to prevent air entry and limit heat leakage when the extractor is not operating.



Forward curved centrifugal impeller
To deliver high performance with a minimum noise level against high static pressure system resistance.

MODEL FEATURES

	S	T
NEON LIGHT	•	•
BACKDRAFT SHUTTER	•	•
ADJUSTABLE RUN-ON-TIMER (1)		•

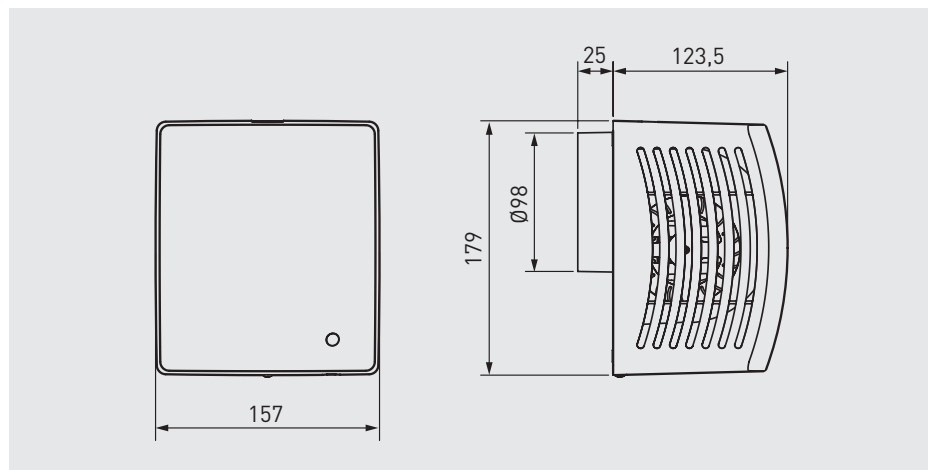
(1) Between 5 and 25 minutes.

TECHNICAL CHARACTERISTICS

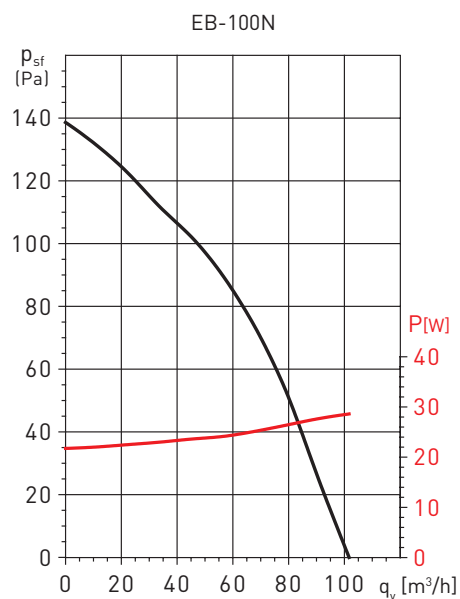
Model	Speed (rpm)	Absorbed power at free discharge (W)	Voltage (V) 50 Hz	Sound pressure level (dB(A)) a 1,5 m*	Airflow at free discharge (m³/h)	IP	Ø duct (mm)	Weight (kg)
EB-100N	2000	28	230	43	100	Clase II / IPX2	100	1,1

* Measured at free discharge.

DIMENSIONS (mm)



PERFORMANCE CURVE



ACCESSORIES



GSA-100
Flexible aluminium ducting.



GRA-75
Aluminium external grille.



CX-80/125
Worm drive ducting clip.



MRT-100
Circular duct joining piece.