



Auto-adjustable whole house extract unit of low-profile and low noise level, that ensures permanent renovation of air in single-dwellings or multi-dwelling blocks.

The unit complies with the requirements established by the Technical Building Code. The unit is complemented by two auto-adjustable air inlets in the main rooms (living room and bedrooms) and with auto-adjustable extract valves in wet areas (bathrooms and kitchen).

Characteristics

- AC 2-speed motor.
- Low profile body ($\leq 19\text{cm}$) made from expanded polipropilene (EPP), which grants very low noise and slight weight (3kg).
- Inlet: 4 inlets of $\varnothing 80$, swivelling at 90° and 1 inlet of $\varnothing 125$.
- Outlet: 1 outlet of $\varnothing 125$, which includes adapter for $\varnothing 160$.
- 4 plugs to block the unused inlets.
- Fixing to make easier its mounting in false ceilings.

HORIZONTAL

In false ceiling



On the floor

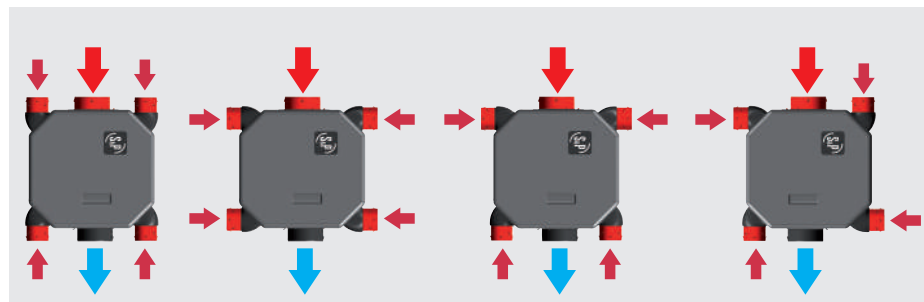


VERTICAL

On the wall



Alternative mounting



Flexibility



Specific applications



VMC
Single
dwellings

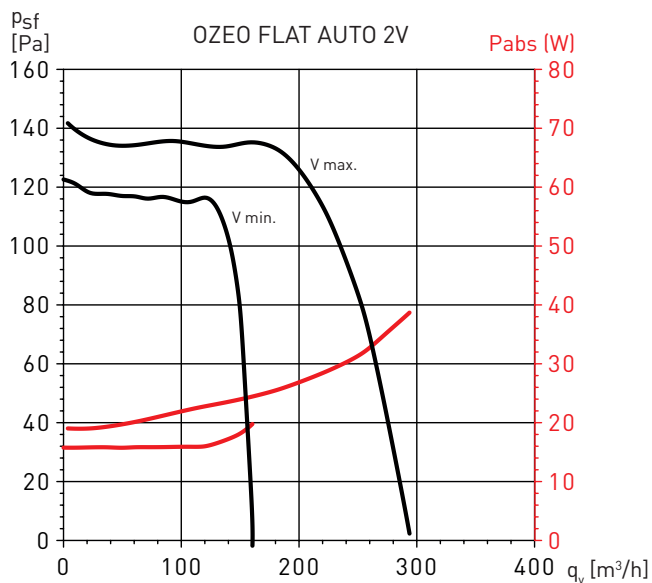


VMC
Multi
dwelling
blocks

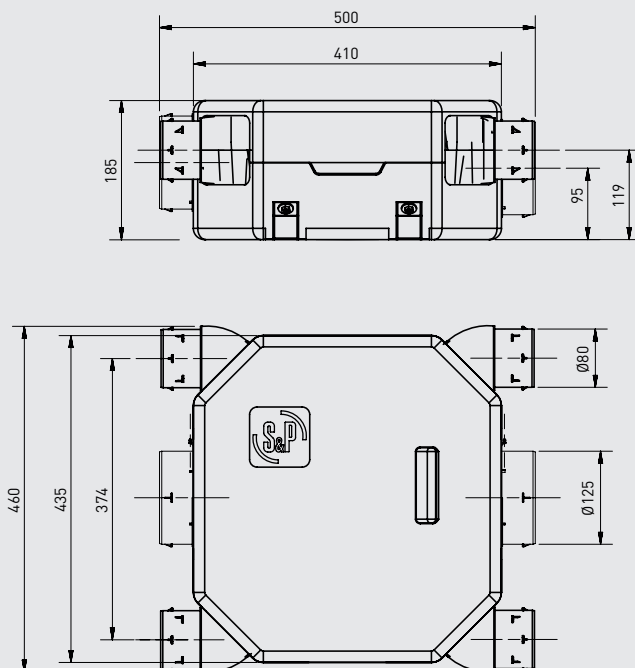
TECHNICAL CHARACTERISTICS

Model	Motor	Voltage (V)	Maximum absorbed power (W)		Medium absorbed power (W)		Maximum absorbed current (A)		Sound pressure radiated Lp (dB(A)) at 120 m³/h	
			V max.	V min.	V max.	V min.	V max.	V min.	V max.	V min.
OZEO FLAT AUTO 2V	AC	230	39	19	22	15	0,2	0,12	27	25

PERFORMANCE CURVES



DIMENSIONS (mm)



ACCESSORIES



BARJ
BARP
 Outlet auto-adjustable valves.



BDOP
 Inlet and outlet valves.



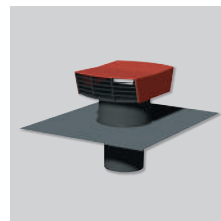
EC-N
ECA
 Auto-adjustable air inlets, standard (EC-N) or acoustic (ECA)



GP
GPX
GP-PRO
GP-ISO
 PVC ducts.



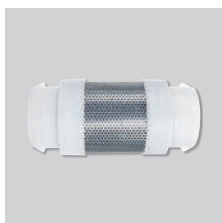
TUBPLA V
TUBPLA
 Self-extinguishing rectangular plastic ducts.
 TUBPLA V series with gasket.



CT
 Roof cap.



PAF
 Circular discharge grille on the wall.



LA
 Silencer.



RED-150P y
ATRF 125/100/80
 Reduction elements to adapt flexible ducts.



FLEXIREC
 Semi-flexible oblong ducts.

FLEXICIR
 Semi-flexible circular ducts.